



900 North Broadway, Turlock, Ca 95380

www.stancofair.com

(209) 668-1333

PLEASE NOTE THE FOLLOWING CHANGES AND UPDATES TO RULES AND IMPORTANT INFORMATION FOR THE 2009 STANISLAUS COUNTY FAIR*

EXHIBIT DEPARTMENT UPDATES

1. Exhibits must be on display as specified in the Exhibitor Handbook. Exhibits will not be released from the fairgrounds before the release date stated in the Exhibitor Handbook. Any violation of this rule will result in the forfeiture of any awards and/or privileges as deemed appropriate by Fair Management.
2. Entry forms are not included in the Exhibitor Handbook. Visit the fair's website www.stancofair.com to download your entry forms. If you are without online access, entry forms may be picked up at the fair office.
3. **NOTE!!!** Visit the fair's website www.stancofair.com to enter your exhibits online, or download your entry form.

JUNIOR LIVESTOCK

4. Showmanship must be entered by the entry deadline of **Thursday, June 4th by 5:00 p.m. (NO entries will be accepted after the entry deadline).**
5. Entry fees for the Junior Livestock Divisions have been increased to \$10.00 per entry. Please refer to the Junior Livestock section of this handbook for specific entry fees per division.
6. Junior Livestock Market Beef weight limitations are as follows: **1000 lbs – 1300 lbs.** Please refer to the Junior Livestock section of this handbook for all livestock rules and regulations.
7. Junior Dairy Goat judging will be on Monday, August 3rd at 8:00 a.m., and 4-H and FFA Dairy Goat Showmanship at 5:00 p.m. in the Goat Show Ring B4.
8. 4-H and FFA Meat Goat judging will be on Tuesday, August 4th at 8:00 a.m. in B4. 4-H and FFA Meat Goat Showmanship judging will be on Wednesday, August 5th at 8:00 a.m. in B4.
9. 4-H Dairy Showmanship and FFA Dairy Showmanship will start at 4:00 p.m. on both Monday, August 3rd for FFA and Wednesday, August 5th for 4-H.
10. Parents/guardians of exhibitors with entries in Livestock, Exhibition Poultry, or Rabbits are eligible to purchase a 10-Day punch card parent pass at a fee of **\$25.00 per card.** There is a limit of two (2) parent passes per family. The fees for the parent passes will be collected through the exhibitor's 4-H Club Community Leader or FFA Advisor. After the 4-H Community Leaders and FFA Advisors purchase these parent passes from the Livestock Office, they will distribute them to the appropriate exhibitors. (Not available to parents/guardians already receiving passes as 4-H Leaders, FFA Advisors, or Fair Staff.) **No passes will be sold after Monday, August 3, 2009. No refunds for parent passes.**
11. LIVESTOCK GATE OPENS DAILY AT 6:00 A.M.
12. **Liability Insurance is required for all exhibitors showing animals at the fair (refer to page A-2).**

JUNIOR LIVESTOCK AUCTION AND REPLACEMENT HEIFER SALE

13. Auction accounts are due and payable within 30 days of billing. Accounts past due (30 days or more) may be subject to a \$25.00 late fee.
14. Buyers with three (3) occurrences of returned checks for non-sufficient funds will not be able to obtain a buyer number or purchase an animal(s) at future Stanislaus County Fair Jr. Livestock Auctions.
15. Buyers with prior outstanding auction balances of 60 days or more will not be issued a buyer number to purchase animals.
16. **Buyers can pre-register until 5:00 p.m. on Friday, August 7th in the Exhibits Office located in Building E-2**

AWARDS ASSEMBLY

17. **ONLY THE OUTSTANDING EXHIBITOR, FFA AG MECHANICS AWARDS, CLEAN BARN, AND THE JOHN THURMAN AWARD WILL BE GIVEN OUT AT THE 2009 AWARDS ASSEMBLY, PRIOR TO THE START OF THE JUNIOR LIVESTOCK AUCTION ON SATURDAY, AUGUST 8TH. ALL OTHER AWARDS WILL BE GIVEN AT RINGSIDE.**

RABBITS & POULTRY

18. All Rabbit and Poultry entry forms must be complete and accurate, with all required information, including breed, color, variety and sex, as listed on the entry form. No entry form will be accepted if all the information is not completed as required.
19. Use SEPARATE entry forms for the First and Second Junior Rabbit Shows. **DO NOT** list divisions and classes for Show 1 (600's) and Show 2 (500's) on the same entry form.

BOVINE TUBERCULOSIS (TB) TESTING FOR EXHIBITION CATTLE ENTERING CALIFORNIA FAIRS

20. Exhibitors **must provide** proof of tuberculosis testing for all dairy breeding cattle over (6) months of age with **ONE of the following documents:**
 - A. Signed documentation from a licensed accredited veterinarian of a negative TB test obtained within sixty (60) days prior to exhibition of all cattle to be sold.
 - B. Signed documentation from a licensed accredited veterinarian of a negative TB test obtained within six months prior to exhibition of all cattle for exhibition only.
 - C. Signed documentation from a licensed accredited veterinarian of a negative whole herd test for the animal's herd of origin (i.e. the herd where the animal has resided for a minimum 4-month period of time immediately prior to exhibition) obtained within twelve (12) months prior to the exhibition.
 - D. A letter from CDFA verifying the completion date of a negative whole herd test for tuberculosis and specifying the official identification of exhibition animals from the herd.
21. A verification of TB testing documentation must be completed prior to the unloading of exhibition animals onto fair premises. If there are any questions regarding this bovine TB test, please call the Animal Health Branch at (916) 651-6278.

***If any differences are found between the body of the handbook and this page of noted changes, all rules and general information included on this page will supersede.**

2009 STANISLAUS COUNTY FAIR

INSURANCE NOTICE

Liability Insurance is required for all Exhibitors showing animals at the Fair

Exhibitors are required to have & provide insurance for all animals exhibited at the Fair. Insurance can be purchased from California Fair Services Authority (CFSA) through the Stanislaus County Fair, or the Exhibitor can provide insurance under the terms required by California Fair Service Authority**. Insurance Cost from CFSA per exhibitor or (immediate) family – unlimited entries - (not for horse): Large Animal-\$35.00
Small Animal (Rabbits, Poultry, Cavies and Dogs) - \$18.00

**Option #1 – Homeowners or Farm Insurance Policy

If the exhibitor provides a Homeowners or Farm insurance policy, there must be an association between the exhibitor and the entity listed on the policy provided. The association could be the last name and address of the exhibitor matches the name and address on the policy. The Homeowners or Farm insurance policy does not need to have additional insured language listed on the policy. There is no required minimum amount of specified coverage for the Homeowners or Farm insurance policy. A copy of the insurance policy, or a copy of an insurance card, with the name and policy number listed, will be acceptable proof of insurance.

**Option #2 – General Liability Policy

If the exhibitor provides a General Liability policy to the fair, the minimum limits on that policy must be \$1,000,000 per occurrence. A copy of the insurance policy certificate, with the name and policy number listed, will be acceptable proof of insurance. Additional insured information must be stated on the policy as follows: “That the State of California, the 38th District Agricultural Association, the Stanislaus County Fair, their agents, directors, officers, servants, and employees are made additional insured, but only insofar as the operations under this contract are concerned”.

**NOTE - If the insurance policy is through a School District, for an FFA Chapter, the policy must state the name of the FFA Chapter and that coverage for exhibitors and animals during the fair from July 31st through August 9th, 2009 is included. Additional insured information is required for a General Liability Policy, as stated above in Option #2.

Insurance fees must be paid, or proof of insurance provided, when the entry form is submitted. If entering online, insurance fees must be paid, or proof of insurance provided, at the fair office no later than 5pm, Thursday, June 18th. Insurance fees are separate from entry fees. The insurance fees must be paid separately from the entry fees (do not include all in one check). The insurance fee payment will be receipted separately from the entry fee payment.

NOTE: UC Cooperative Extension has stated that they do not provide coverage for 4-H animals should an animal injure a third party or cause property damage. It is the responsibility of the 4-H member to obtain outside insurance coverage on their animals.

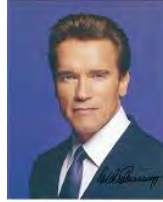
Questions? – please call CFSA at (916) 263-6145 – Lianne Lewellen

2009 STANISLAUS COUNTY FAIR

Sponsored by the 38th District Agricultural Association

An Agency of the State of California, the Association not only conducts the Stanislaus County Fair each year, but also operates the Fairgrounds at Turlock on a continuous basis. The buildings, grounds and equipment, including our Satellite Wagering Facility are continually being developed by the Association as permanent, year-round recreational facilities for use by the Stanislaus community.

STATE OF CALIFORNIA



Arnold Schwarzenegger
Governor

DEPARTMENT OF FOOD AND AGRICULTURE



A.G. Kawamura
Secretary

STATE OFFICIALS



JEFF DENHAM
State Senator
12th Senatorial District



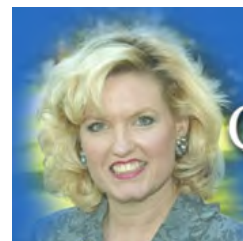
DAVE COGDILL
State Senator
14th Senatorial District



BILL BERRYHILL
Assemblyman
26th District



TOM BERRYHILL
Assemblyman
25th District



CATHLEEN GALGIANI
Assemblywoman
17th District